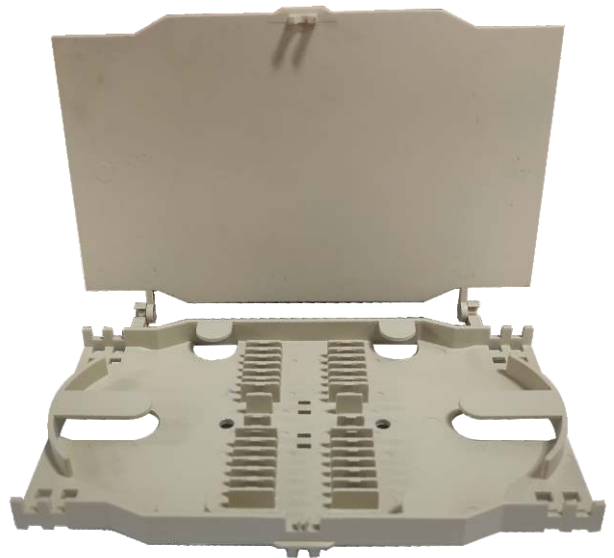


## 24 Fiber Splice Tray

24 fiber splice tray with different design for better protecting fiber in fiber optic terminal box, optical distribution box or splice enclosures. Splice tray are used as an important accessory for fiber cable management items. Such as fiber optic terminal box, fiber optic splice closure, ftth terminal box, cabinet, etc. Splice tray expands fiber splice capabilities. Each tray provides space for mounting fiber splice protectors and excess fiber. The splice tray offers a unique and flexible splice and storage system with both loose tube and tight-buffered optical cable designs.

The compact splice cassettes designed for simple, cost effective low and mid-sized fiber splicing applications. Each cassette is supplied with splice holders that secure and protect both fusion and mechanical splices. It also the top cover is included.

24 cores fiber optic splice tray is made of plastic (ABS) and designed for easy and efficient access to its interior. Opening and closing of the tray is not required any special tools. The cover is easily assembled in the tray; in addition, it provides protection to fiber stocks. Splice trays normally hold up to 24 splices, and several trays are used together to splice a large fiber cable. Each tray provides space for mounting fiber splice protectors and excess fiber.



Dimension (HxWxD): **150 X 95 X 10mm**

### Application

- ❖ Optical distribution frame
- ❖ Fiber optic terminal box
- ❖ FTTH terminal box
- ❖ Fiber optic splice closure

### Features

- ❖ ABS material used ensures the body strong and light
- ❖ Provision to hold 24-splice protector
- ❖ Provision to hold PLC Splitter
- ❖ Protect and manage heat shrink style spliced fibers
- ❖ Top cover to protect spliced fibers. Use for single-mode or multimode fiber
- ❖ Longer bending radius for fiber, Easy operation of fiber/pigtails
- ❖ Suitable for single core optical fiber cable